

Working together to deliver better UK rail stations

Implementing the Vision
CP6 Initial Industry Plans (IIP)

Stations Summit 20th October 2015

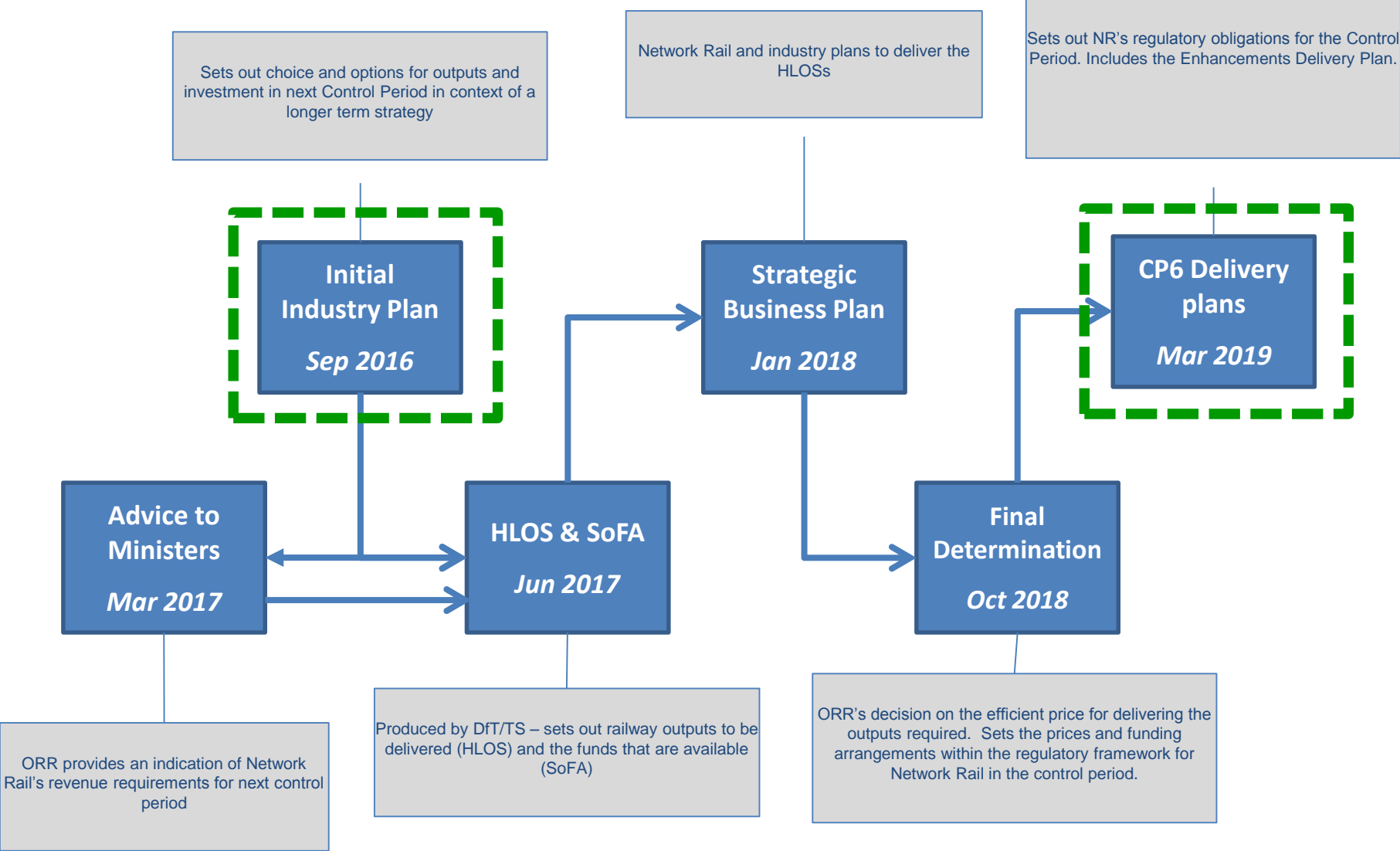
Kyle Adams, Senior Station Capacity Planner
Rubina Greenwood, Head of Buildings & Architecture

What is CP6 IIP?

To inform the outputs to be specified in the High Level Output Specification (HLOS) and to aid governments in determining the level of funding required to be reflected in the Statement of Funds Available (SoFA)



IIPs and the Periodic Review process



How is the submission informed?

The IIP submission will be informed by a number of cross-industry and government planning activities including:

- The long term planning process
- High Speed
- Digital Railway
- Technical strategy
- Rolling Stock Strategy
- Customer Information Strategy
- Freight Strategy
- **Renewals and Maintenance**
- **Enhancements**

How can we build upon these?

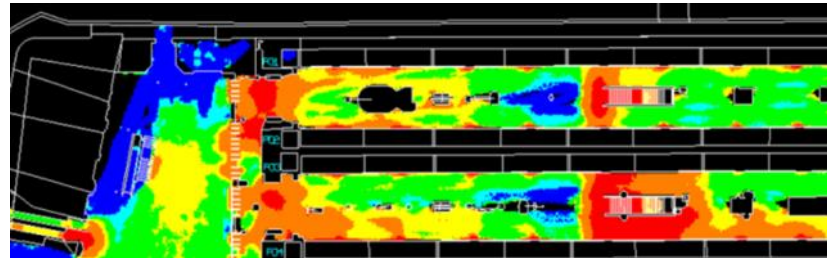


Capacity driven enhancements

- Identify stations that require investigation



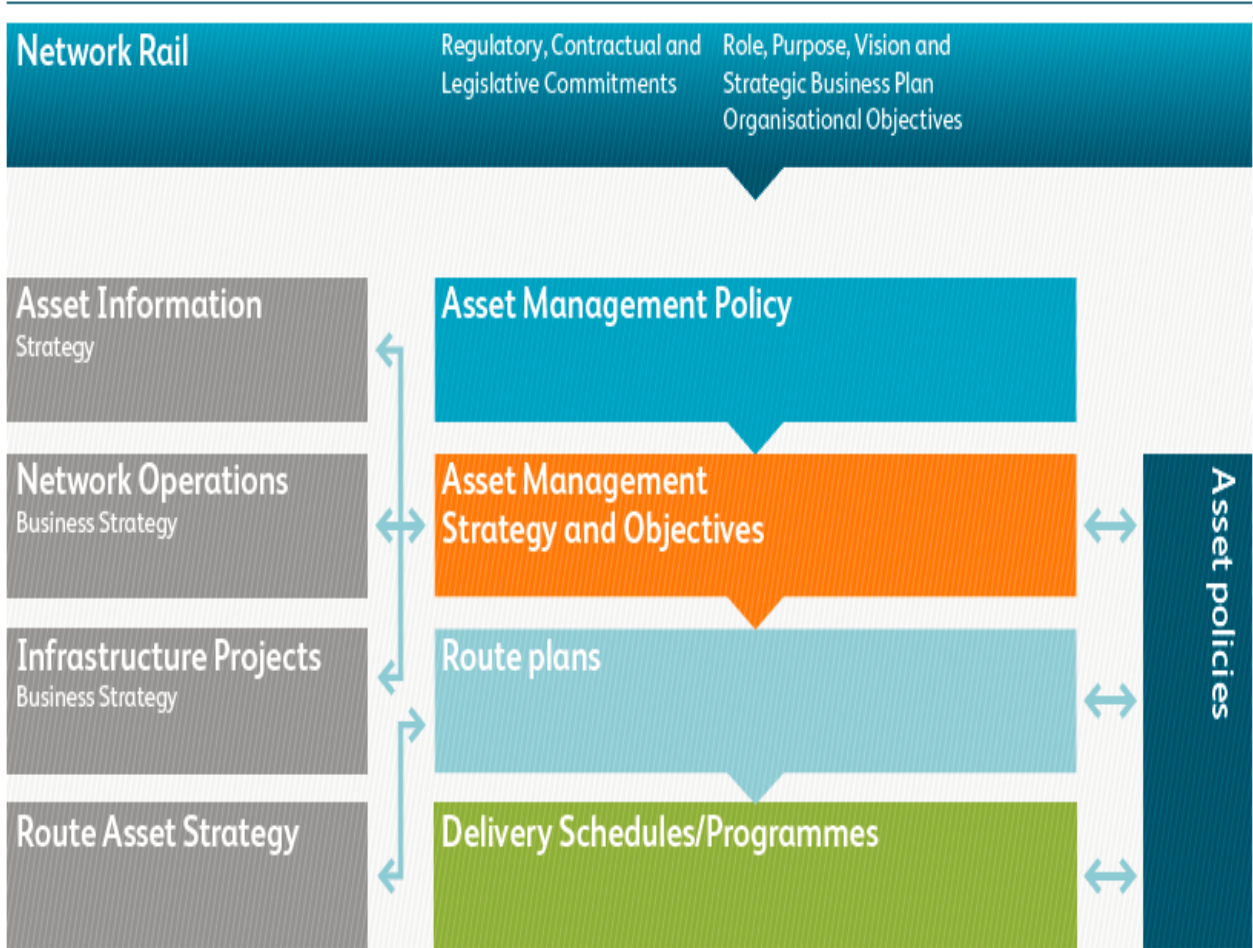
- Carry out passenger count surveys Analyse station capacity



- Create prioritised list of stations requiring investment
- Review the national list of stations – sense test it with RDG, TOCs, NR & others
- Gather detail of interventions and cost estimate on top priority and large schemes
- Estimate a lump sum fund for the remainder of stations

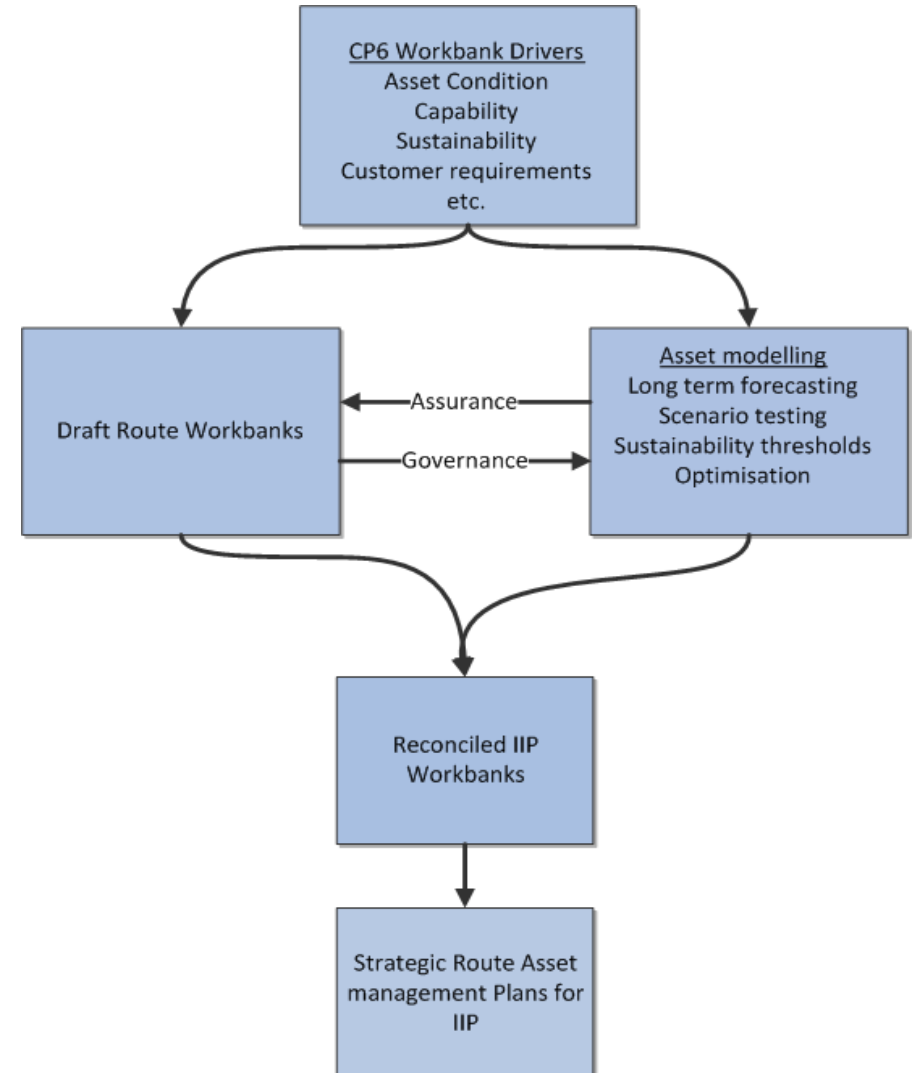
Renewals and maintenance

- Route maintenance and renewal business plans are developed to align with the asset management policy.
- Asset policy also defines the process for governance, assurance and measurement of policy effectiveness.



CP6 IIP - Renewals and maintenance

- Station Asset Condition and Criticality
- Station Asset Load Carrying Capability
- Legislative and Statutory Compliance
- Customer Specific Requirements including accessibility and inclusivity
- Route/ TOC Specific Drivers
- Special Inspections and Technical Advice notices



Conclusion

NR Alignment with RDG Stations Principles

RDG Principles	NR Principles
1-Customer Focused	2-Inclusiveness
	3-Reliability
	12- Delight
2-Use of Technology	7- Systems Approach
3-Seamless Journey	5-Intermodal Exchange & digitisation
4-Local Needs & Opportunities	9-Urban Integration
5-Safe & Secure	1-Safety & Security
6-Entrepreneurial Spirit	11-Retail, Social & Business
9-Optimised Network	
7-Long Term Stewardship	6- Whole Life
	8- Sustainability
8-Shared Industry Know-how	10- Standardisation
	4-Capacity & Future Proofing

Thank you